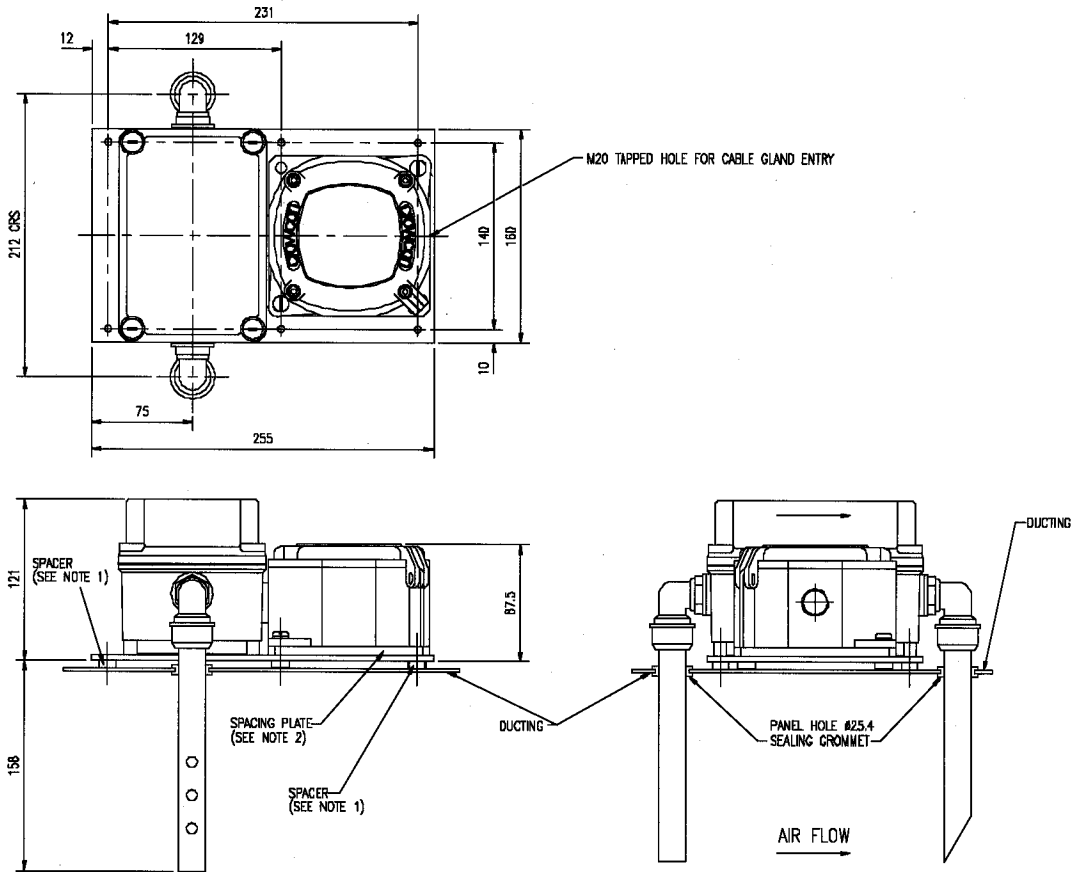


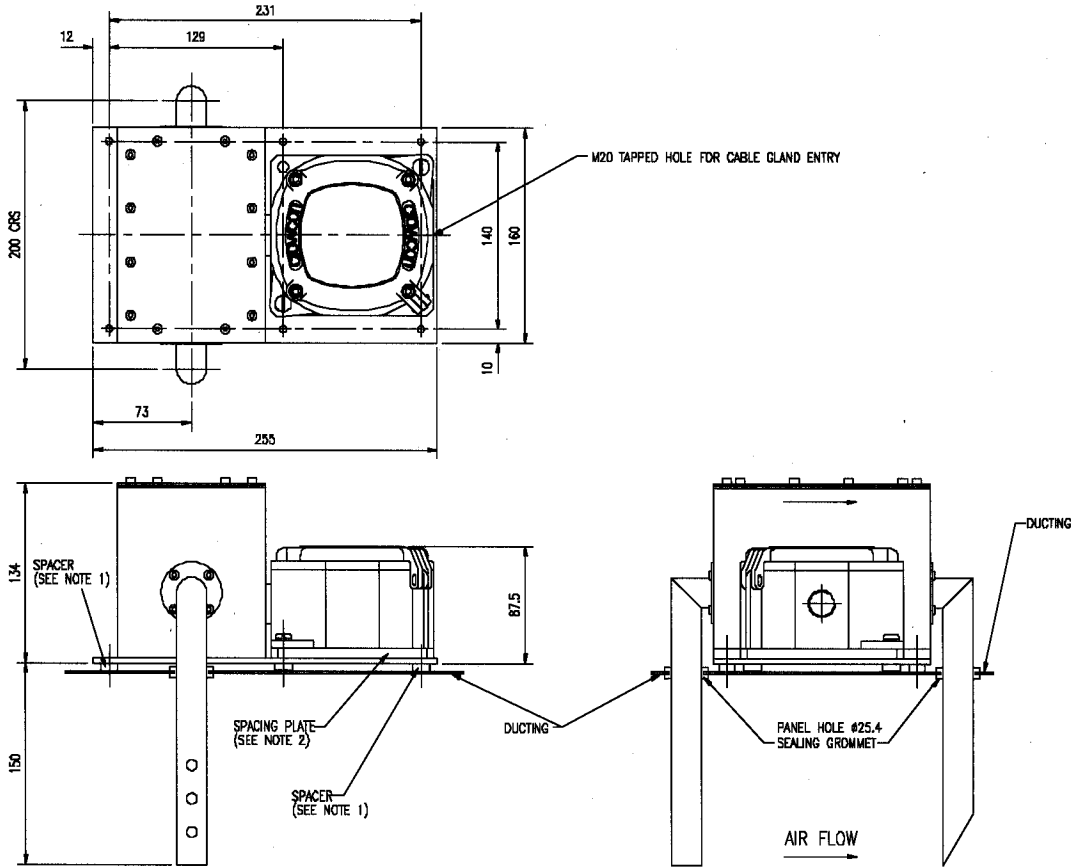
## SUPPORT DATA SHEET

### Air Sampling Unit 86ASU

#### GENERAL ASSEMBLY (PLASTIC)



## GENERAL ASSEMBLY (STAINLESS STEEL)



### TYPICAL SPECIFICATION

The system shall comprise a sampling chamber suitable for mounting on a duct wall, which is connected to two 1" diameter sample pipes. The inlet pipe shall be drilled with a series of gas access holes. The chamber shall be manufactured from plastic with a removable lid for sensor maintenance and calibration purposes. Within the chamber shall be a gas detector suitable for the application screwed

into an external explosion proof junction box. The gas detector/junction box combination shall be a Crowcon Gaslink, RGD90, DI5/6 or DI9.

Once installed, the system shall rely on the Venturi effect to divert gas through the inlet pipe and across the detector.

The system shall be supplied complete with all fittings, seals and glands necessary for installation.

**CROWCON**

**Crowcon Detection Instruments Limited**  
 2 Blacklands Way, Abingdon Business Park,  
 Abingdon, Oxfordshire, OX14 1DY  
 Tel: 01235 553057 Fax: 01235 553062

Represented by: