



**INSTRUMENTS**

# **GW-3 Setup Program Operator's Manual**

**Part Number: 71-0515**

**Revision: P2**

**Released: 5/3/21**

---

# Table of Contents

|   |           |
|---|-----------|
| <b>Chapter 1: Introduction</b>  | <b>4</b>  |
| Overview  | 4         |
| System Requirements   | 5         |
| <b>Chapter 2: Setup</b>   | <b>6</b>  |
| Installing the GW-3 Setup Program   | 6         |
| IrDA Downloading Cable  | 7         |
| <i>Installing an IrDA Adapter Cable</i>                                   | 7         |
| <i>Windows® Infrared Operation Note</i>                                   | 7         |
| <b>Chapter 3: Operation</b>   | <b>9</b>  |
| Launching the Program   | 9         |
| Changing the Password.  | 10        |
| Connecting an Instrument.   | 11        |
| Downloading Instrument Parameters   | 12        |
| Turning Off an Instrument   | 13        |
| <b>Chapter 4: Changing Instrument Parameters (Main Window)</b>            | <b>14</b> |
| Manually Editable Parameters (Alarm Points, etc.)                         | 14        |
| Date/Time   | 16        |
| Clear Logger Data.  | 16        |
| Restore Default Settings  | 17        |
| <b>Chapter 5: Changing Instrument Parameters (Detail Settings Window)</b> | <b>18</b> |
| Parameter Tab-Maintenance   | 18        |
| Parameter Tab-User.   | 21        |
| Parameter Tab-Display   | 25        |
| Station & User Tab  | 26        |
| <b>Chapter 6: Using .seq Files to Quickly Load Instrument Parameters.</b> | <b>32</b> |
| Saving a Configuration File   | 32        |
| Loading a Configuration File  | 33        |

|  |           |
|--|-----------|
| <b>Chapter 7: Calibration</b> .....      | <b>35</b> |
| Materials .....                          | 35        |
| Procedure .....                          | 35        |
| <b>Chapter 8: Spare Parts List</b> ..... | <b>39</b> |

---

**CAUTION:**   *Read and understand this manual before using the GW-3 Setup Program. Also read and understand the GasWatch 3 Operator's Manual included with the GasWatch 3 portable gas detection unit.*

---

# Chapter 1: Introduction

---

## Overview

The GW-3 Setup Program allows you to change instrument parameters. It also allows you to save parameter configuration files that can be viewed or used to update another instrument's parameter settings.

This manual will teach you how to:

- install and launch the software
- install the downloading cable (if needed)
- change GasWatch 3 parameters
- save parameter configuration files that can be uploaded to an instrument to change its parameter settings
- upload parameter configuration files to an instrument to change its parameter settings
- perform a calibration

Before you get started, be sure to review the system requirements in the next section.

---

**CAUTION:** *The GasWatch 3 detects oxygen deficiency and elevated levels of oxygen, carbon monoxide, or hydrogen sulfide, all of which can be dangerous or life threatening. When using the GasWatch 3, you must follow the instructions and warnings in the GasWatch 3 Operator's Manual to assure proper and safe operation of the unit and to minimize the risk of personal injury.*

---

---

**CAUTION:** *The operator of this instrument is advised that if the equipment is used in a manner not specified in this manual, the protection provided by the equipment may be impaired.*

---

---

# System Requirements

To use the GW-3 Setup Program, your personal computer must meet the following requirements:

- **Operating Systems:** Windows<sup>®</sup> 7, Windows<sup>®</sup> 8, or Windows<sup>®</sup> 10
- **Processor:** IBM<sup>®</sup> compatible PC running Pentium<sup>®</sup> 2 or higher.
- **Memory:** 32 MB RAM minimum
- **Available Hard Disk Space:** 32 MB minimum
- Infrared port or USB port and a USB/IrDA adapter cable

## Chapter 2: Setup

---

### Installing the GW-3 Setup Program

1. Launch Windows®.
2. Exit from all applications and open windows.
3. Go to [www.rkiinstruments.com/gw3](http://www.rkiinstruments.com/gw3).
4. Click on the **Download** tab.
5. Click the **GW-3 Setup Program** link.
6. A .zip file will begin to download. Select whether you want to open or save the .zip file.
7. Extract the contents of the .zip file.
8. Double click the **setup.exe** file.
9. Follow the on-screen instructions in the InstallShield Wizard Window to install the program.
10. If the InstallShield Wizard finds versions of Windows® files on your computer newer than those in the downloaded .zip file, it will ask you if you want to keep these newer files. Click **Yes**.
11. When the InstallShield Wizard indicates that installation is complete, click the **Finish** button.

---

## IrDA Downloading Cable

The instrument uses an on-board infrared port to communicate with a computer. The port complies with IrDA 1.1 protocol standards.

---

**NOTE:** If your computer has a built-in infrared port that complies with IrDA 1.1 protocol, you do not need an adapter cable to download data.

---

If your computer does not have an infrared port, you will need to install an IrDA 1.1 compliant IrDA/USB adapter cable on your computer. See pg. 39 for the RKI part number.

### Installing an IrDA Adapter Cable

---

**NOTE:** Do not plug the IrDA/USB adapter cable into your computer before installing the driver.

---

Follow the manufacturer's instructions for installing the cable on your computer. If you do not have installation instructions from the cable manufacturer, see your Windows documentation. In general, you must go to the Control Panel and use the Add Hardware Wizard to install the cable drivers. RKI makes no warranty for the operation or compatibility of the drivers with any particular device.

### Windows® Infrared Operation Note

Before attempting to use the Setup Program with an IrDA adapter cable, you must confirm or change a setting in the Infrared Configuration window.

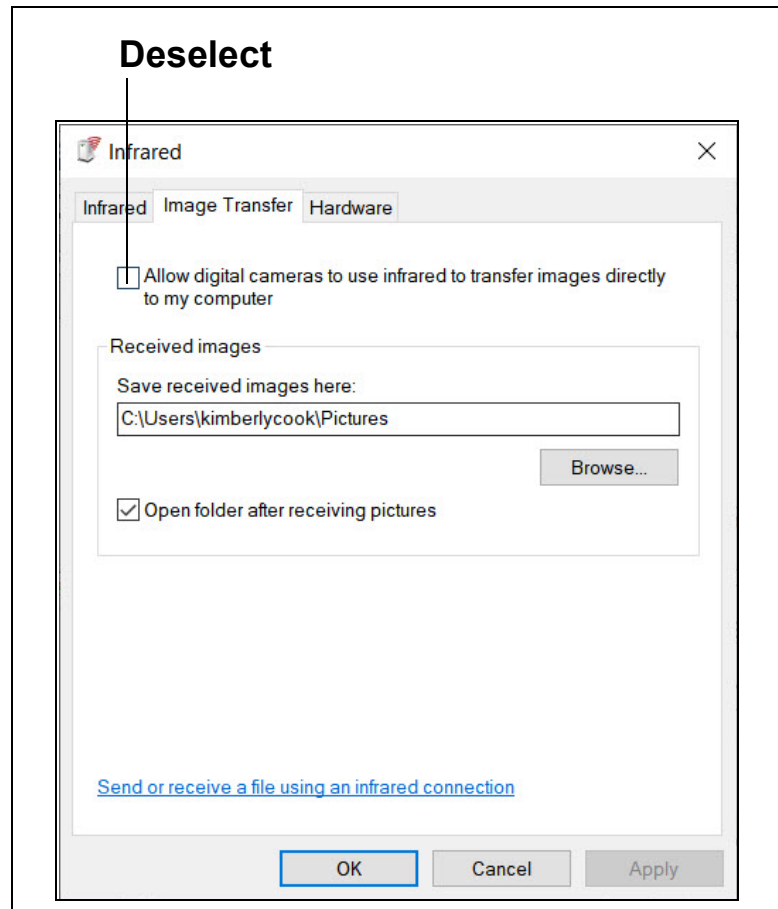
---

**NOTE:** If you have a Windows 7 computer, the Infrared Configuration window may not appear. If the Infrared Configuration window does not appear, disregard the directions below.

---

1. Click **Start** on the Windows® Icon Tray.
2. If **Control Panel** is available to select in the **Start** menu, select it.  
If **Control Panel** is not selectable in the Start menu but **Settings** is, select **Settings**, then select **Control Panel**.
3. If the Control Panel is viewed by category, open the **Hardware and Sound** folder then click "Send or Receive a File" under the **Infrared** section.  
If the Control Panel is viewed by icon, click the **Infrared** icon.
4. Click on the Image Transfer tab.

5. Deselect the selection box for “Allow digital cameras to use infrared to transfer images directly to my computer”.



**Figure 1: Image Transfer Tab**

6. Click **OK**.
7. Close the Control Panel window.



# Chapter 3: Connection and Downloading

## Launching the Program

- 1. Double click the **GW-3 Config** shortcut on the computer desktop or navigate to the **GW-3 Config** program using the **Start** menu.
- 2. The program prompts you to enter a password.

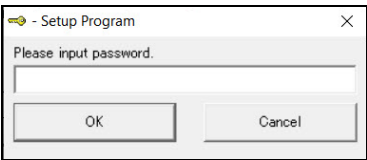


Figure 2: Password Window

- 3. The factory-set password is **1939**. See pg. 10 for instructions to change the password.
- 4. The program launches and the Main Window appears.

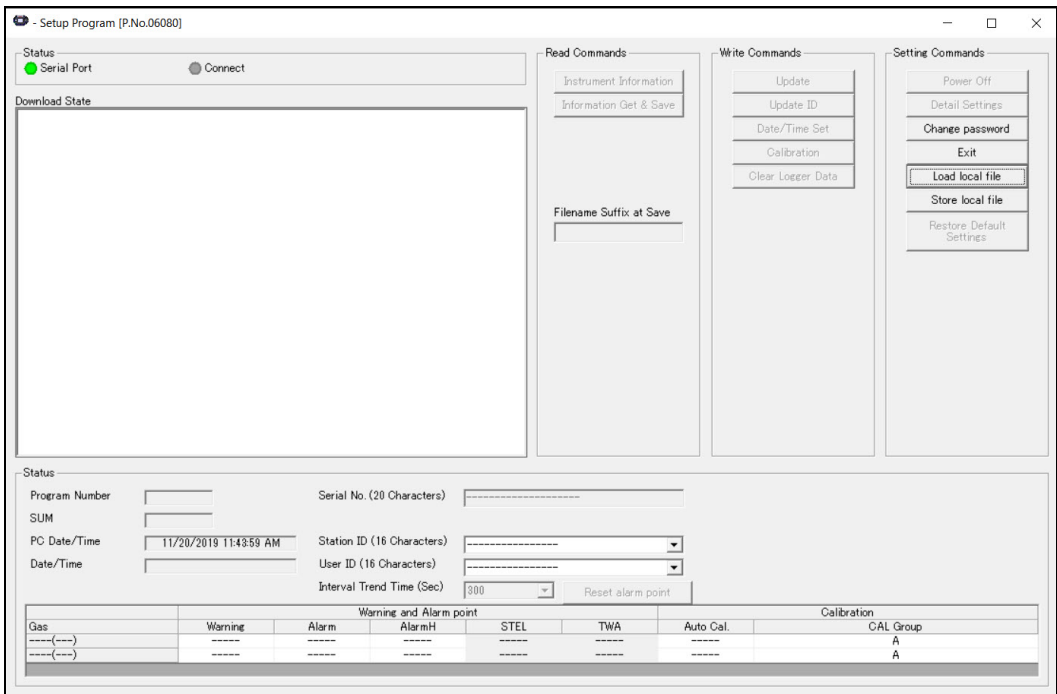
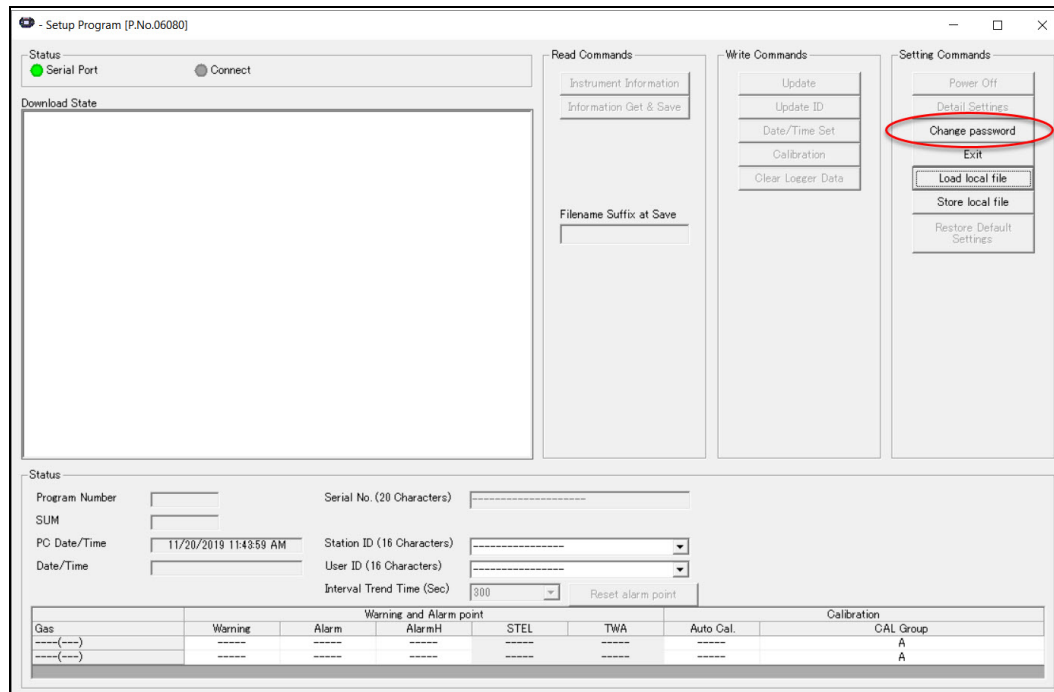


Figure 3: Main Window

# Changing the Password

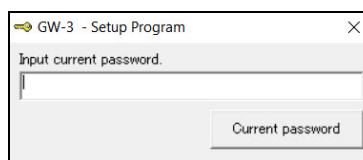
Setup Program access is password-protected. The default password is **1939**. The password can be changed but it cannot be turned off.

1. Launch the GW-3 Setup Program as described above.
2. An instrument does not need to be connected to change the Setup Program password.
3. Click **Change password** on the right side of the Main Window.

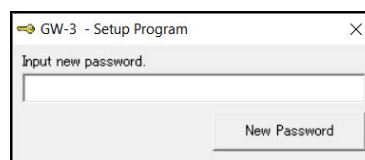


**Figure 4: Change password Button**

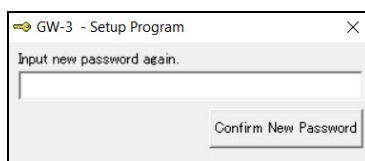
4. Type in the current password and click **Current password**.



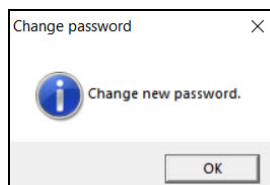
5. Enter the new password and click **New Password**.



6. Reenter the new password and click **Confirm New Password**.



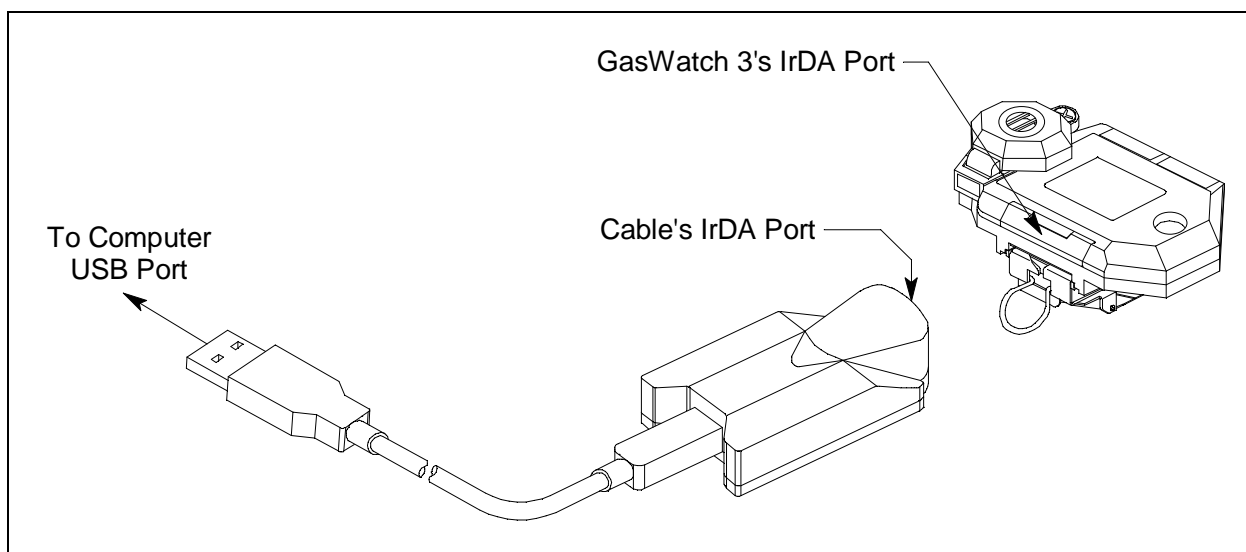
7. Click **OK** in the confirmation window.



---

## Connecting an Instrument

1. Launch the GW-3 Setup Program as described on pg. 9.
2. If you are using an IrDA cable, plug the cable into your computer.
3. Place the instrument's infrared port 1-2 inches away from the computer or cable infrared port and align the two ports. The GasWatch 3's infrared port is at the top of the instrument.



**Figure 5: Aligning IrDA Ports**

4. Press and hold the instrument's POWER/MODE button. Release it when you hear a beep.

5. When the program establishes a connection with the instrument, the Connect light turns green and “Connection Successful.” displays.

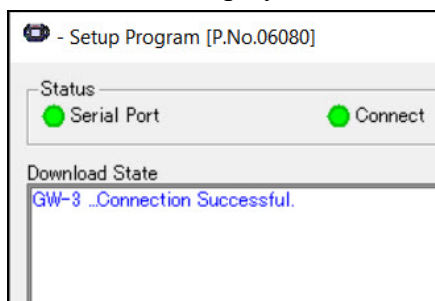


Figure 6: Connection Message

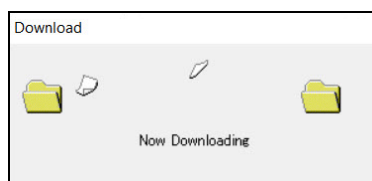
---

## Downloading Instrument Parameters

### Instrument Information Button

Use **Instrument Information** to load a connected instrument’s parameters into the Setup Program.

1. Launch the GW-3 Setup Program as described on pg. 9.
2. Connect a GasWatch 3 as described above.
3. Click **Instrument Information**. The program indicates that it is downloading the instrument’s parameters.



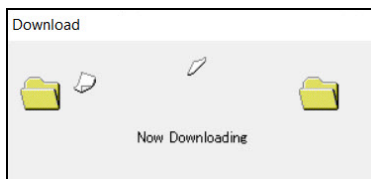
4. The instrument’s parameter settings are now loaded in the Setup Program.
5. If desired, view or change the instrument parameters as described in “Chapter 4: Changing Instrument Parameters (Main Window)” on page 14 and “Chapter 5: Changing Instrument Parameters (Detail Settings Window)” on page 18.

### information Get & Save Button

**Information Get & Save** does 2 things:

- Downloads instrument parameters to the Setup Program where they can be viewed and edited, just like **Instrument Information**.
- Saves instrument configuration and most recent calibration information to a .csv file. The default file name is “GW3\_Setting.csv”. The Setup Program’s **Filename Suffix at Save** field lets you add a suffix to the file name (“GW3\_Setting[suffix].csv”). All **Information Get & Save** operations save to the same .csv file until you change the suffix.

1. Launch the GW-3 Setup Program as described on pg. 9.
2. Connect a GasWatch 3 as described above.
3. Type a suffix name into the **Filename Suffix at Save** field. The suffix can be used to differentiate files generated from different instruments or instrument types.
4. Click **Information Get & Save**. The program indicates that it is downloading the instrument's parameters.



5. The file is saved in the following file path: C:\Users\[user name]\AppData\Local\VirtualStore\Windows\SysWOW64. Hidden folders need to be visible to access this location. Use a spreadsheet program such as Microsoft Excel to open and view the saved .csv file(s). Information changed in .csv files does not affect Setup Program or instrument operation.
6. The instrument's parameter settings are now loaded in the Setup Program.
7. If desired, use the Setup Program to view or change the instrument parameters as described in "Chapter 4: Changing Instrument Parameters (Main Window)" on page 14 and "Chapter 5: Changing Instrument Parameters (Detail Settings Window)" on page 18.

---

## Turning Off an Instrument

1. With an instrument connected to the program, click **Power Off** and then **Yes** in the window that appears.
2. The instrument shuts off and the program's Connect light turns gray.

---

**NOTE:** If you shut down the Setup Program without turning off the instrument, the instrument goes into alarm after 3 minutes to indicate that it is not connected to a program. Reset the alarm by either a) starting up the Setup Program and establishing a connection or b) turning the instrument off using POWER/MODE.

---

# Chapter 4: Changing Instrument Parameters (Main Window)

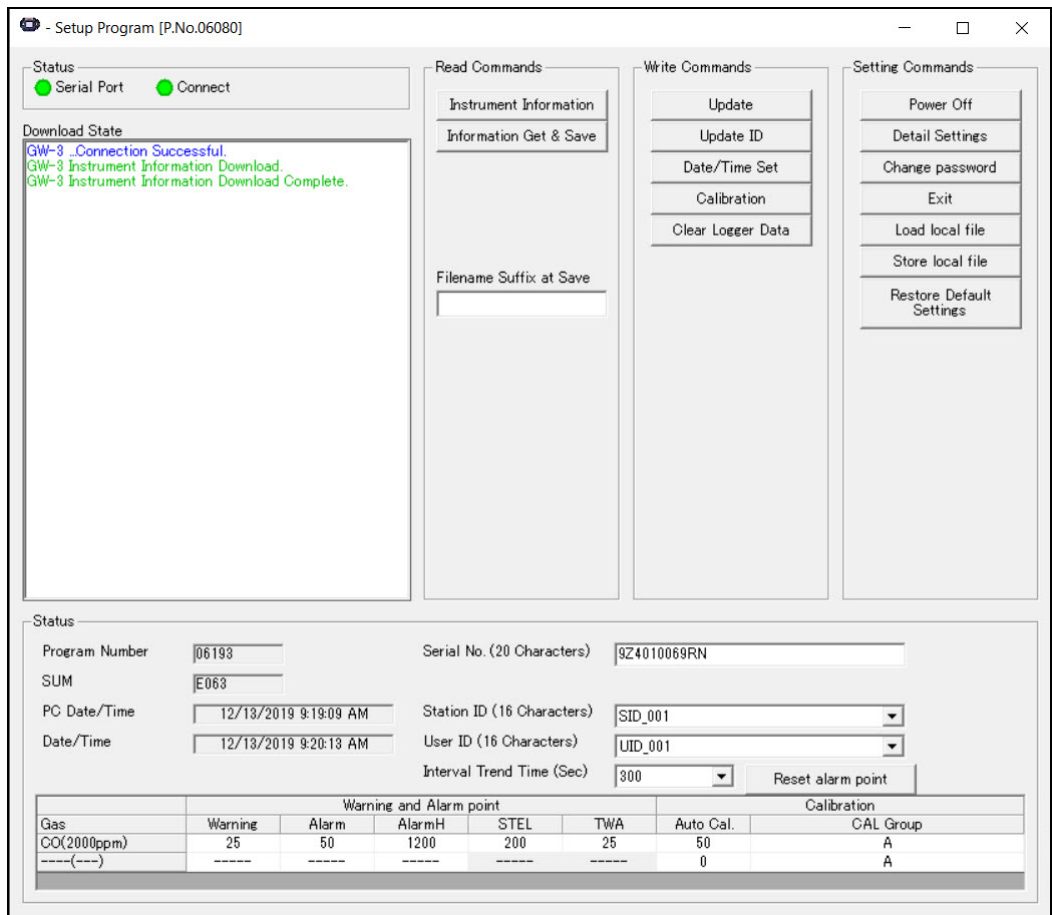


Figure 7: Main Window

## IDs, Alarm Points, etc.

Table 1: Main Window Items

| Parameter          | Description  |
|--------------------|--|
| Serial Number      | The serial number is 20 characters. Highlight the existing number, delete it, and type in a new number.  |
| User ID/Station ID | Use the drop down menu to select a new ID. Custom user IDs and station IDs can be generated in the <b>Detail Settings\Station &amp; User</b> tab (pg. 26). |

**Table 1: Main Window Items**

| Parameter                | Description  |  |                      |
|--------------------------|--|--|----------------------|
| Interval Trend Time      | Use the drop down menu to select an interval trend time. Datalogging capacity based on interval trend time is shown in the table below.  |  |                      |
|                          |  | Interval Time  | Datalogging Capacity |
|                          |  | 10 seconds   | 10 hours             |
|                          |  | 20 seconds   | 20 hours             |
|                          |  | 30 seconds   | 30 hours             |
|                          |  | 1 minute   | 60 hours             |
|                          |  | 3 minutes  | 180 hours            |
|                          |  | 5 minutes  | 300 hours            |
|                          |  | 10 minutes   | 600 hours            |
| Alarm Points             | Double click an alarm point and type in a new value. If you enter an unacceptable value for an alarm point, the cell’s background turns red. You cannot upload instrument parameters until you change the alarm point to an acceptable value. Alarm set-point limitations are shown below.   |  |                      |
|                          | O <sub>2</sub>   | • 0.0% ≤ <b>ALARM</b> ≤ <b>WARNING</b> ≤ 20.0%<br>• 21.8% ≤ <b>ALARM H</b> ≤ 40.0% |                      |
|                          | H <sub>2</sub> S   | 1.0 ppm ≤ <b>WARNING</b> ≤ <b>ALARM</b> ≤ <b>ALARM H</b> ≤ 200.0 ppm               |                      |
|                          | CO   | 20 ppm ≤ <b>WARNING</b> ≤ <b>ALARM</b> ≤ <b>ALARM H</b> ≤ 2000 ppm                 |                      |
| Reset alarm point button | The <b>Reset alarm point</b> button resets the alarm points to the RKI default settings <u>or</u> to the settings saved by a <b>SAVE AP</b> operation in the instrument’s Gas Select Mode, if one was done.  |  |                      |
| Auto Cal Value           | Double click an auto cal value and type in a new value. The auto cal value should match the concentration listed on your calibration gas cylinder.   |  |                      |
| Calibration Group        | Double click a cylinder assignment to get the drop down menu to appear. Select a new cylinder.<br>CO, H <sub>2</sub> S, and O <sub>2</sub> versions just have 1 cylinder. CO(-H <sub>2</sub> ) and CO/O <sub>2</sub> versions have 2 cylinders. CO and H <sub>2</sub> should never be assigned to the same cylinder. CO and O <sub>2</sub> can be assigned to the same cylinder if you calibrate with CO in <u>nitrogen</u> . If you calibrate with CO in <u>air</u> , then CO and O <sub>2</sub> need to be assigned to different cylinders and you need to also get a cylinder of 100% nitrogen to zero the oxygen sensor. |  |                      |

1. Launch the GW-3 Setup Program as described on pg. 9.
2. Connect a GasWatch 3 as described on pg. 11.
3. Download instrument parameters as described on pg. 12.
4. Update the desired parameters.

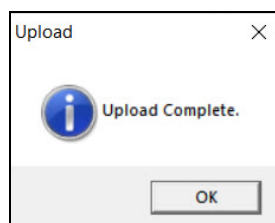
5. If you updated the serial number, user ID, or station ID, click **Update ID** and **Yes** in the window that appears.
6. The ID information is uploaded to the GasWatch 3. Click **OK** in the confirmation window once the upload is complete.
7. If you updated the interval trend time, alarm points, auto cal value, or calibration group, click **Update** and **Yes** in the window that appears.
8. New parameters are uploaded to the GasWatch 3. Click **OK** in the confirmation window once the upload is complete.

---

## Date/Time

Performing a **Date/Time Set** operation sets the GasWatch 3's date and time to the computer's date and time.

1. Launch the GW-3 Setup Program as described on pg. 9.
2. Connect a GasWatch 3 as described on pg. 11.
3. Download instrument parameters as described on pg. 12.
4. Click **Date/Time Set**.
5. Click **Yes** in the window that appears.
6. Click **OK** when the upload is complete. The GasWatch 3's date and time now match the computer's date and time.



---

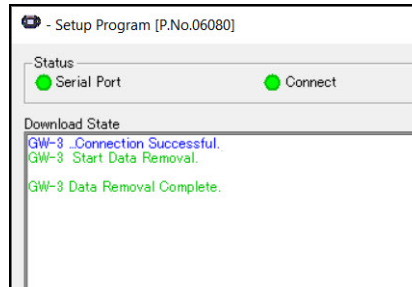
## Clear Logger Data

Performing a **Clear Logger Data** operation clears all logged data from the instrument. Be sure to download data to the Datalogging Program before clearing the data.

1. Launch the GW-3 Setup Program as described on pg. 9.
2. Connect a GasWatch 3 as described on pg. 11.
3. Download instrument parameters as described on pg. 12.
4. Click **Clear Logger Data**.
5. Click **Yes** in the window that appears.



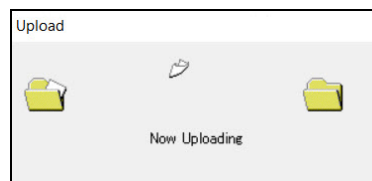
6. The message window indicates **Start Data Removal** and the Setup Program communicates with the GasWatch 3.
7. After a few minutes, the message window indicates **Data Removal Complete**. All logged data has been cleared from the GasWatch 3.



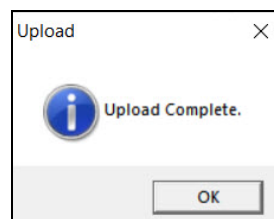
## Restore Default Settings

Performing a **Restore Default Settings** operation restores all instrument settings to the RKI default.

1. Launch the GW-3 Setup Program as described on pg. 9.
2. Connect a GasWatch 3 as described on pg. 11.
3. Download instrument parameters as described on pg. 12.
4. Click **Restore Default Settings**.
5. Click **Yes** in the window that appears.
6. The program begins uploading the default settings to the instrument.



7. Click **OK** when the upload is complete. The RKI default settings are now loaded into the GasWatch 3.



# Chapter 5: Changing Instrument Parameters (Detail Settings Window)

This chapter shows you how to:

- Change instrument parameters in the Parameter tab of the Detail Settings Window. The Parameter tab has 3 sub-tabs of adjustable settings.
- Make custom User IDs and Station IDs in the Station&User tab of the Detail Settings Window.

## Parameter Tab - Maintenance

GW-3 Factory Setting

Station & User

Parameter

Maintenance

User

Disp

|                             |        |  |  |
|-----------------------------|--------|--|--|
| Battery Change Date         | 190101 |  |  |
| Alarm Pattern               | Latch  |  |  |
| Zero Adjustment on Demand   | On     |  |  |
| Auto Zero Adjustment        | Off    |  |  |
| ID Display                  | Off    |  |  |
| Display CAL group settings  | On     |  |  |
| DISP Suppress               | Off    |  |  |
| DISP Zero Follower          | Off    |  |  |
| Enable Maintenance Password | On     |  |  |
| Maintenance Password        | 3000   |  |  |
| Password Protection         | Off    |  |  |

|                   | Sensor Change Date | Suppress | Zero Follower |
|-------------------|--------------------|----------|---------------|
| CO_CO-H2(2000ppm) | 190101             | On       | On            |
| H2_CO-H2(2000ppm) | 190101             | Off      | Off           |

(Left space 0)

OK

Cancel

Figure 8: Parameter\Maintenance Tab

**Table 2: Parameter\Maintenance Tab Items**

| Parameter                   | Description  |
|-----------------------------|--|
| Battery Change Date         | Keep track of what date the battery was replaced. Format is YYMMDD.  |
| Alarm Pattern               | <b>Reset:</b> Instrument automatically resets alarm condition once gas reading falls below (rises above for oxygen Warning and Alarm) the alarm setpoint.<br><b>Latch (factory setting):</b> User must press POWER/MODE or AIR to reset an alarm condition once gas reading falls below (rises above for oxygen Warning and Alarm) the alarm setpoint.   |
| Zero Adjustment on Demand   | <b>On (factory setting):</b> You can perform a fresh air adjustment by pressing and holding AIR in Measuring Mode.<br><b>Off:</b> You cannot perform a fresh air adjustment by pressing and holding AIR in Measuring Mode.   |
| Auto Zero Adjustment        | <b>On:</b> You are prompted to do an auto zero operation at the end of the warmup sequence.<br><b>Off (factory setting):</b> You are not prompted to do an auto zero operation at the end of the warmup sequence.  |
| ID Display                  | <b>On:</b> User ID and Station ID screens appear in startup sequence. IDs can be changed in Display Mode if <b>DISP MODE SETTING</b> in the <b>Parameter\User</b> tab is also set to <b>On</b> .<br><b>Off (factory setting):</b> User ID and Station ID screens do not appear in startup sequence. IDs cannot be changed in Display Mode.   |
| Display CAL Group Settings  | <b>On (factory setting for CO/O<sub>2</sub> and hydrogen-compensated CO versions):</b> CYL SEL item appears in User and Maintenance Modes' GAS CAL item.<br><b>Off (factory setting for CO, H<sub>2</sub>S, and all super toxic gases):</b> CYL SEL item does not appear in User and Maintenance Modes' GAS CAL item.<br>* This item does not generally need to be changed from its default.                         |
| DISP Suppress               | <b>On:</b> Zero suppression menu item appears in User Mode.<br><b>Off (factory setting):</b> Zero suppression menu item does not appear in User Mode. Zero suppression menu item always appears in Maintenance Mode.   |
| DISP Zero Follower          | <b>On:</b> Zero follower menu item appears in User Mode.<br><b>Off (factory setting):</b> Zero follower menu item does not appear in User Mode. Zero follower menu item always appears in Maintenance Mode.  |
| Enable Maintenance Password | <b>On (factory setting):</b> Maintenance Mode is password-protected.<br><b>Off:</b> Maintenance Mode is not password-protected.  |
| Maintenance Password        | Defines the 4-digit password needed to enter Maintenance Mode. Factory setting is <b>3000</b> .  |
| Password Protection         | <b>On:</b> A password (defined in <b>User Password</b> field of <b>Parameter\User</b> tab) is required to perform an auto zero, perform a demand zero, clear a peak reading, turn off the GasWatch 3, reset an alarm condition, or enter User Mode from the warmup sequence to perform a bump test or calibration.<br><b>Off (factory setting):</b> A password is not required for any of the items described above. |
| Sensor Change Date          | Keep track of what date the sensor was replaced. Format is YYMMDD.   |
| Suppress                    | This item is not intended for field adjustment. The factory setting is <b>On</b> . Suppression values are:<br>O <sub>2</sub> : 0.5% volume<br>H <sub>2</sub> S: 0.3 ppm<br>CO: 2 ppm   |

**Table 2: Parameter\Maintenance Tab Items**

| <b>Parameter</b> | <b>Description</b>  |
|------------------|---|
| Zero Follower    | This item is not intended for field adjustment. Factory setting is <b>On</b> . The oxygen channel does not support zero follower functionality. |

1. Launch the GW-3 Setup Program as described on pg. 9.
2. Connect a GasWatch 3 as described on pg. 11.
3. Download instrument parameters as described on pg. 12.
4. Click **Detail Settings** and then click on the **Parameter\Maintenance** tab.
5. For parameters with defined options, click on the current parameter setting and use the drop down menu to choose a new setting.
6. For open-ended parameters like **Sensor Change Date**, double click the current setting, delete the current setting, and type in a new one.
7. Change other parameters in the **Parameter\User** (pg. 21), **Parameter\Disp** (pg. 25), or **Station & User** (pg. 26) tabs, if desired.
8. Click **OK**.
9. Change parameters in the Main Window (pg. 14), if desired.
10. Click **Update** and **Yes** in the window that appears.
11. New parameters are uploaded to the GasWatch 3. Click **OK** in the confirmation window once the upload is complete.
12. If you changed the serial number, user ID, or station ID in the Main Window, click **Update ID** and **Yes** in the window that appears.
13. The ID information is uploaded to the GasWatch 3. Click **OK** in the confirmation window once the upload is complete.

## Parameter Tab - User

| Station & User                               |                | Parameter |
|--|----------------|-----------|
| Maintenance                                  | User           | Disp      |
| Cal.Limit Display                            | On             |           |
| Calibration Time Limit(1-365days)            |                | 90        |
| Cal.Limit Check                              | Confirm to use |           |
| Automatic start after successful calibration | On             |           |
| One Touch Cal. Time(0-180sec)                |                | 0         |
| Bump Test Limit Display                      | Off            |           |
| Bump Test Time Limit(0-30days)               |                | 30        |
| Bump Test Limit Check                        | Confirm to use |           |
| Automatic start after successful bump test   | On             |           |
| Bump Test Time(sec)                          |                | 30        |
| Bump Test Threshold(%)                       |                | 50        |
| Calibration Time(sec) after Bump Test Failed |                | 60        |
| Calibration after Bump Test Failed           | On             |           |
| Lunch Break                                  | Off            |           |
| Confirmation Beep                            | Off            |           |
| Confirmation Beep Time(min) 0.5 or 1-99      |                | 5         |
| LCD Backlight Time(0-255sec)                 |                | 30        |
| Key Tone                                     | On             |           |
| DISP MODE SETTING                            | On             |           |
| Enable User Password                         | Off            |           |
| User Password                                |                | 0000      |

(Left space 0)

OK Cancel

Figure 9: Parameter\User Tab

Table 3: Parameter Tab-User Items

| Parameter   | Description  |
|---|--|
| Cal.Limit Display   | <b>On (factory setting):</b> Instrument alerts you at startup if a calibration is due. Type of notification depends on <b>Cal.Limit Check</b> setting.<br><b>Off:</b> Instrument does <u>not</u> alert you at startup if a calibration is due.   |
| Calibration Time Limit  | How often the instrument should be calibrated. Choices are <b>1 - 365</b> days. Factory setting is <b>90</b> days.   |
| Cal.Limit Check<br><i>Does not affect operation unless Cal. Limit Display is set to On (factory setting).</i> | <b>Confirm to Use (factory setting):</b> Press and release AIR to acknowledge calibration is due then continue into Measuring Mode.<br><b>Can't Use:</b> Cannot enter Measuring Mode until a successful calibration is performed.<br><b>None:</b> A screen indicates that a calibration is due but warmup continues.   |
| Automatic start after successful calibration  | <b>On (factory setting):</b> If only one calibration cylinder is assigned, the GasWatch 3 automatically starts its warmup sequence after a <u>successful</u> calibration. If multiple calibration cylinders are assigned, this parameter has no effect on operation.<br><b>Off:</b> The GasWatch 3 does <u>not</u> automatically start its warmup sequence after a successful calibration. |

**Table 3: Parameter Tab-User Items**

| Parameter  | Description   |
|--|---|
| One Touch Cal. Time  | <b>0 seconds</b> (factory setting): Auto Calibration (A-CAL) item appears in <b>GAS CAL</b> menu instead of Easy Calibration (E-CAL).<br><b>XX seconds</b> : Easy Calibration (E-CAL) item appears in <b>GAS CAL</b> menu instead of Auto Calibration (A-CAL). During a calibration, the instrument counts down from the number of seconds you select.                                  |
| Bump Test Limit Display  | <b>On</b> : Instrument alerts you at startup if a bump test is due. Type of notification depends on <b>Bump Test Limit Check</b> setting.<br><b>Off</b> (factory setting): Instrument does <u>not</u> alert you at startup if a bump test is due.   |
| Bump Test Time Limit   | How often the instrument should be bump tested. Choices are <b>0</b> to <b>30</b> days. Factory setting is <b>30</b> days.  |
| Bump Test Limit Check<br><i>Does not affect operation unless <b>Bump Test Limit Display</b> is set to <b>On</b> (factory setting is <b>Off</b>).</i> | <b>Confirm to Use</b> (factory setting): Press and release AIR to acknowledge bump test is due then continue into Measuring Mode.<br><b>Can't Use</b> : Cannot enter Measuring Mode until a successful bump test is performed.<br><b>None</b> : A screen indicates that a bump test is due but warmup continues.  |
| Automatic start after successful bump test   | <b>On</b> (factory setting): If only one calibration cylinder is assigned, the GasWatch 3 automatically starts its warmup sequence after a <u>successful</u> bump test. If multiple calibration cylinders are assigned, this parameter has no effect on operation.<br><b>Off</b> : The GasWatch 3 does <u>not</u> automatically start its warmup sequence after a successful bump test. |
| Bump Test Time   | How long gas is applied during a bump test. Options: <b>30</b> (factory setting), <b>45</b> , <b>60</b> , and <b>90</b> seconds.  |
| Bump Test Threshold  | Percentage of the calibration gas concentration that the response must be within in order to pass bump. Options: <b>10%</b> , <b>20%</b> , <b>30%</b> , <b>40%</b> , and <b>50%</b> (factory setting).<br><i>Example: A bump test done with 50 ppm and a 50% threshold setting must respond between 25 ppm and 75 ppm to pass.</i>  |
| Calibration Time(sec) after Bump Test Failed   | How long gas is applied during an automatic calibration after a failed bump test. Only applies if <b>Calibration After Bump Test Failed</b> is set to <b>On</b> . <b>Bump Test Time</b> is deducted from this time. Options: <b>60</b> (factory setting), <b>90</b> , and <b>120</b> seconds.   |
| Calibration After Bump Test Failed   | <b>On</b> (factory setting): If a bump test fails, a calibration automatically starts.<br><b>Off</b> : If a bump test fails, a calibration does <u>not</u> automatically start.   |
| Lunch Break  | <b>On</b> : Lunch break feature is on. The instrument asks if you want to resume peak and TWA readings at startup.<br><b>Off</b> (factory setting): Lunch break feature is off. The instrument resets peak and TWA readings every time it's turned on.  |

**Table 3: Parameter Tab-User Items**

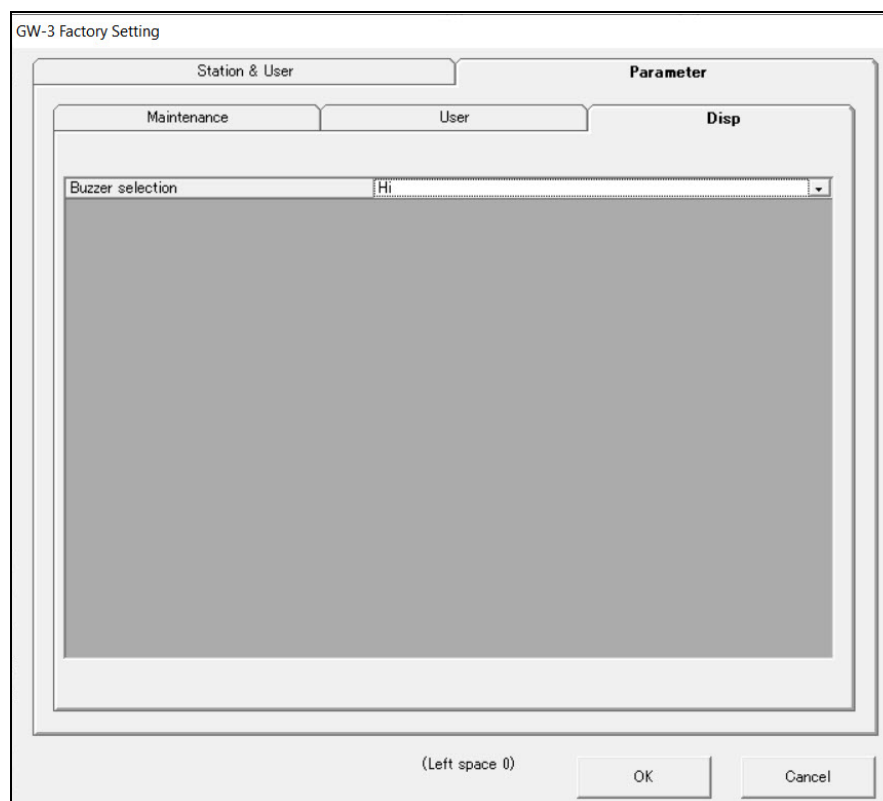
| Parameter                   | Description   |
|-----------------------------|---|
| Confirmation Beep           | <p><b>OFF (factory setting):</b> The GasWatch 3 does not provide a confirmation alert or non-compliance indicator.</p> <p><b>LED:</b> The GasWatch 3's LEDs double flash as often as defined by the <b>Confirmation Beep Time</b> parameter to verify that the instrument is operating.</p> <p><b>BUZZER:</b> The GasWatch 3's buzzer double beeps as often as defined by the <b>Confirmation Beep Time</b> parameter to verify that the instrument is operating.</p> <p><b>LED+BUZZER:</b> The GasWatch 3's LEDs double flash and the buzzer double beeps as often as defined by the <b>Confirmation Beep Time</b> parameter to verify that the instrument is operating.</p> <p><b>BUMP/CAL:</b> If a bump test or a calibration is due and if <b>Bump Test Limit Check</b> or <b>Cal.Limit Check</b> is set to <b>Confirm to Use</b> (factory setting) or <b>None</b>, the GasWatch 3's LEDs double flash as often as defined by the <b>Confirmation Beep Time</b> parameter to indicate a non-compliance. Once a bump test or calibration (depending on which is due) is done, the LEDs stop flashing.</p> |
| Confirmation Beep Time(min) | Confirmation alert interval. Type of confirmation alert depends on <b>Confirmation Beep</b> setting. Options: <b>30 seconds, 1 - 99 minutes</b> in 1 minute increments. Factory setting is <b>5 minutes</b> .   |
| LCD Backlight Time          | How long the backlight stays on after the last button press. Options: <b>0 - 255 seconds</b> in 1 second increments. Factory setting is <b>30 seconds</b> .   |
| Key Tone                    | <p><b>On (factory setting):</b> Buzzer sounds when button is pressed.</p> <p><b>Off:</b> Buzzer does not sound when button is pressed.</p>  |
| DISP MODE SETTING           | <p><b>On:</b> <b>BUZZ.VOL</b> screen appears in Display Mode. <b>USER ID</b> and <b>STN ID</b> screens appear in Display Mode if <b>ID Display</b> in <b>Parameter\Maintenance</b> tab is also set to <b>On</b> (factory setting is <b>Off</b>).</p> <p><b>Off (factory setting):</b> <b>USER ID</b>, <b>STN ID</b>, and <b>BUZZ.VOL</b> screens do not appear in Display Mode.</p>   |
| Enable User Password        | <p><b>On:</b> User Mode is password protected.</p> <p><b>Off (factory setting):</b> User Mode is not password-protected.</p>  |
| User Password               | Defines the password needed to enter User Mode or to turn the instrument off (if <b>Password Protection</b> is set to <b>On</b> in the <b>Parameter\Maintenance</b> tab). Factory setting is <b>0000</b> .  |

1. Launch the GW-3 Setup Program as described on pg. 9.
2. Connect a GasWatch 3 as described on pg. 11.
3. Download instrument parameters as described on pg. 12.
4. Click **Detail Settings** and then click on the **Parameter\User** tab.
5. For parameters with defined options, click on the current parameter setting and use the drop down menu to choose a new setting.
6. For open-ended parameters like **User Password**, double click the current setting, delete the current setting, and type in a new one.

7. Change other parameters in the **Parameter\Maintenance** (pg. 18), **Parameter\Disp** (pg. 25), or **Station & User** (pg. 26) tabs, if desired.
8. Click **OK**.
9. Change parameters in the Main Window (pg. 14), if desired.
10. Click **Update** and **Yes** in the window that appears.
11. New parameters are uploaded to the GasWatch 3. Click **OK** in the confirmation window once the upload is complete.
12. If you changed the serial number, user ID, or station ID in the Main Window, click **Update ID** and **Yes** in the window that appears.
13. The ID information is uploaded to the GasWatch 3. Click **OK** in the confirmation window once the upload is complete.



## Parameter Tab - Display



**Figure 10: Parameter\Display Tab**

**Table 4: Parameter Tab-Display Items**

| Parameter        | Description   |
|------------------|---|
| Buzzer selection | <u><b>Hi</b></u> (factory setting): Buzzer volume is high.<br><u><b>Low</b></u> : Buzzer volume is low. |

1. Launch the GW-3 Setup Program as described on pg. 9.
2. Connect a GasWatch 3 as described on pg. 11.
3. Download instrument parameters as described on pg. 12.
4. Click **Detail Settings** and then click on the **Parameter\Disp** tab.
5. Click on the current parameter setting and use the drop down menu to choose a new setting.
6. Change other parameters in the **Parameter\Maintenance** (pg. 18), **Parameter\User** (pg. 21), or **Station & User** (pg. 26) tabs, if desired.
7. Click **OK**.

8. Change parameters in the Main Window (pg. 14), if desired.
9. Click **Update** and **Yes** in the window that appears.
10. New parameters are uploaded to the GasWatch 3. Click **OK** in the confirmation window once the upload is complete.
11. If you changed the serial number, user ID, or station ID in the Main Window, click **Update ID** and **Yes** in the window that appears.
12. The ID information is uploaded to the GasWatch 3. Click **OK** in the confirmation window once the upload is complete.

## Station and User Tab

Use the **Station & User** tab to define custom user IDs and station IDs.

1. Launch the GW-3 Setup Program as described on pg. 9.
2. Connect a GasWatch 3 as described on pg. 11.
3. Download instrument parameters as described on pg. 12.
4. Click **Detail Settings** and then click on the **Station & User** tab.
5. If you do not currently have any user-defined User IDs or Station IDs programmed into the instrument, the screen appears as shown below.

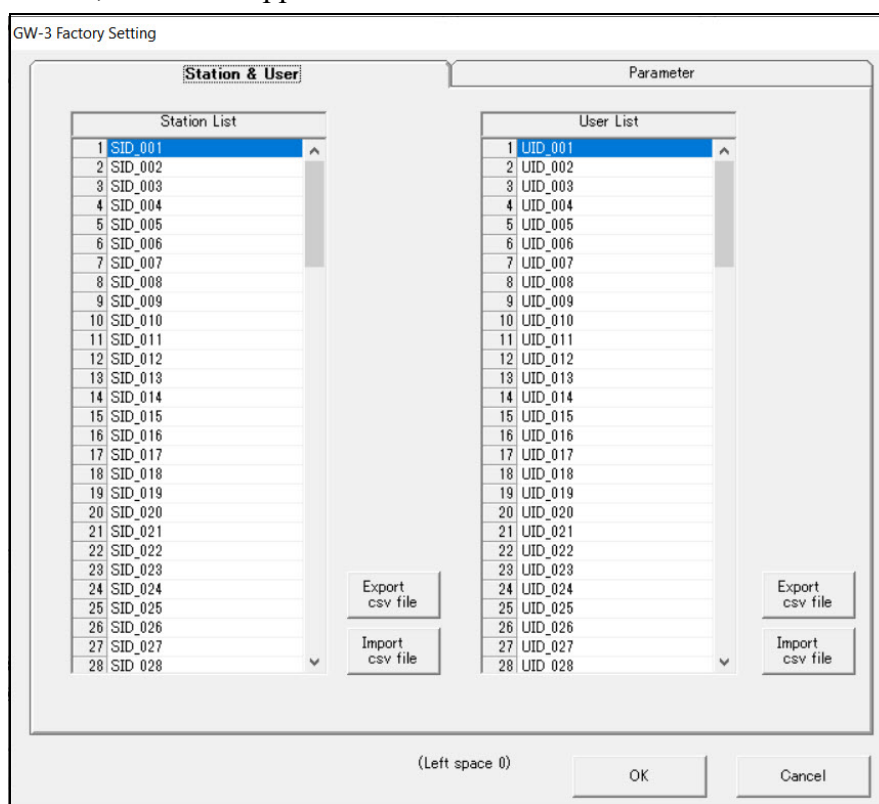
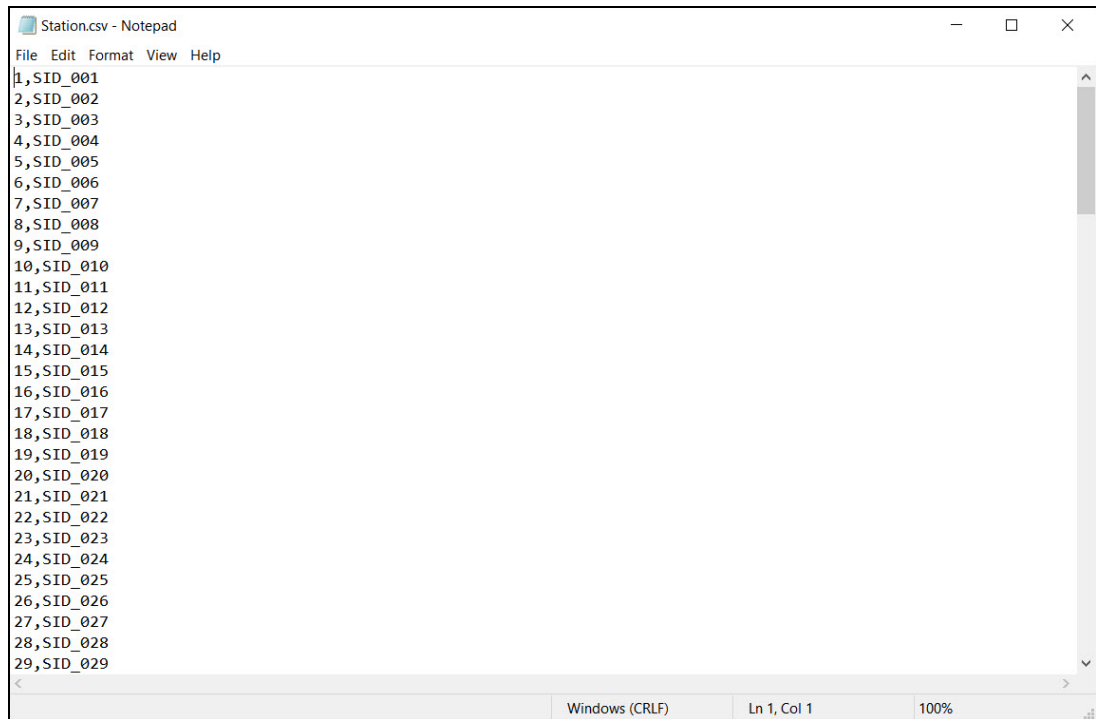


Figure 11: Station & User Tab with Factory IDs

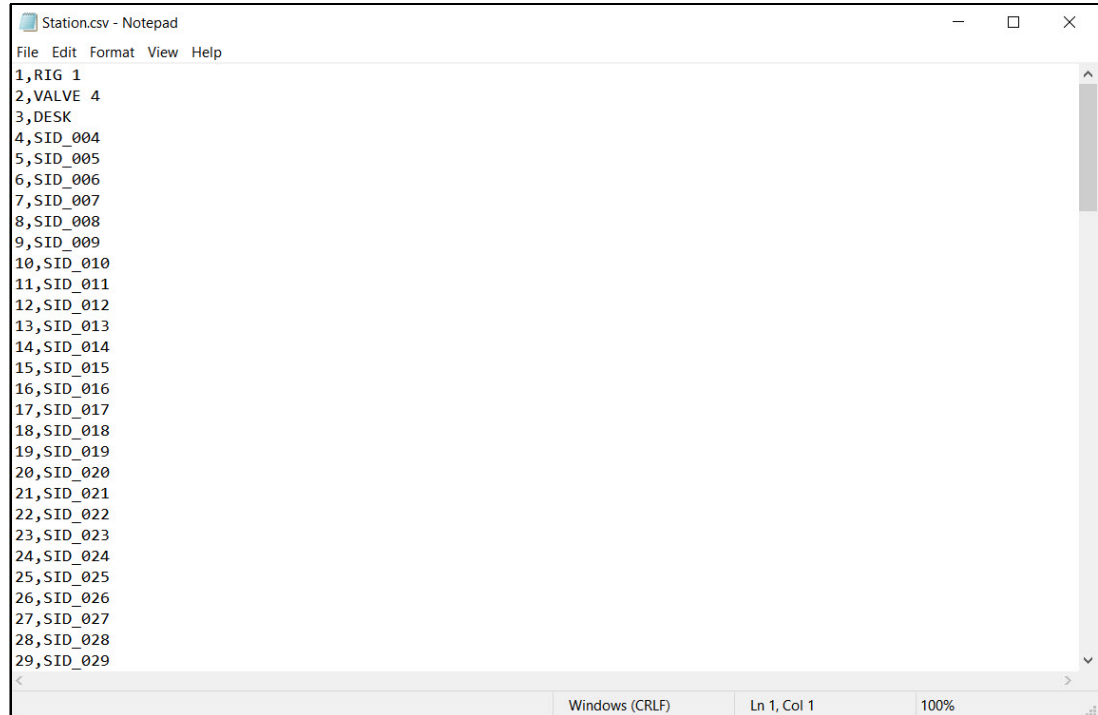
6. Click the appropriate **Export csv file** button. The following example shows how to edit Station IDs.
7. Navigate to the file storage location, type in a file name, click **Save**, and then click **OK** in the export confirmation window that appears.
8. Open the .csv file in a word processing program such as Word, WordPad, or Notepad.



**Figure 12: Station ID .csv File Opened in Notepad**

9. Any existing Station or User IDs are displayed. Factory-loaded Station or User IDs have a SID\_XXX or UID\_XXX format.

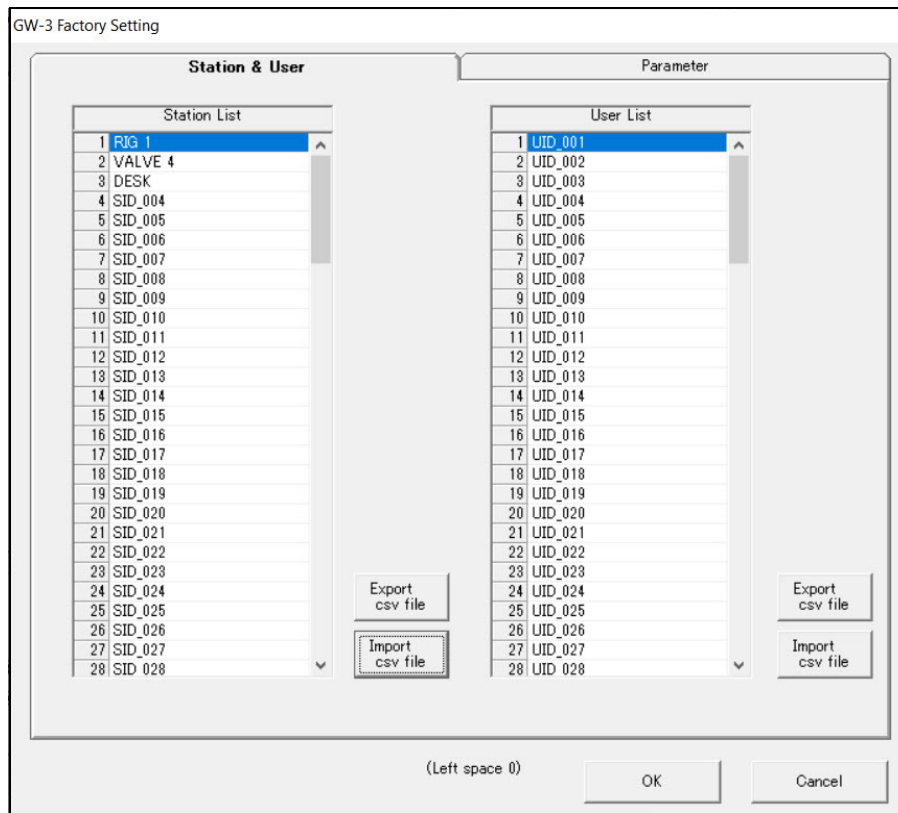
10. Delete the existing name and replace it with the desired name. The name can be up to 16 characters long and may be any uppercase letter or number. However, only 7 characters are visible on the instrument screen. If you intend to use the instrument's Display Mode to switch between user and station IDs, make sure that the first 7 characters of each ID are unique.



**Figure 13: Station ID .csv File Opened in Notepad**

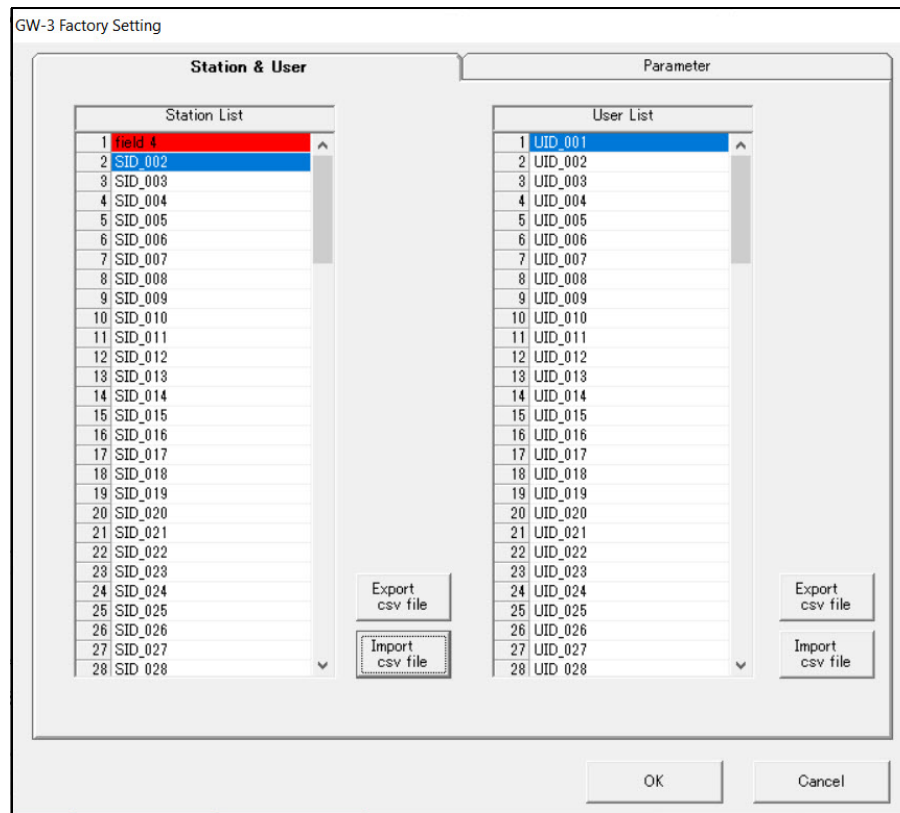
11. Save the file.
12. Click the appropriate **Import csv file** button.

13. Select the file you want to import and click **Open**.



**Figure 14: Station & User Tab with Custom IDs**

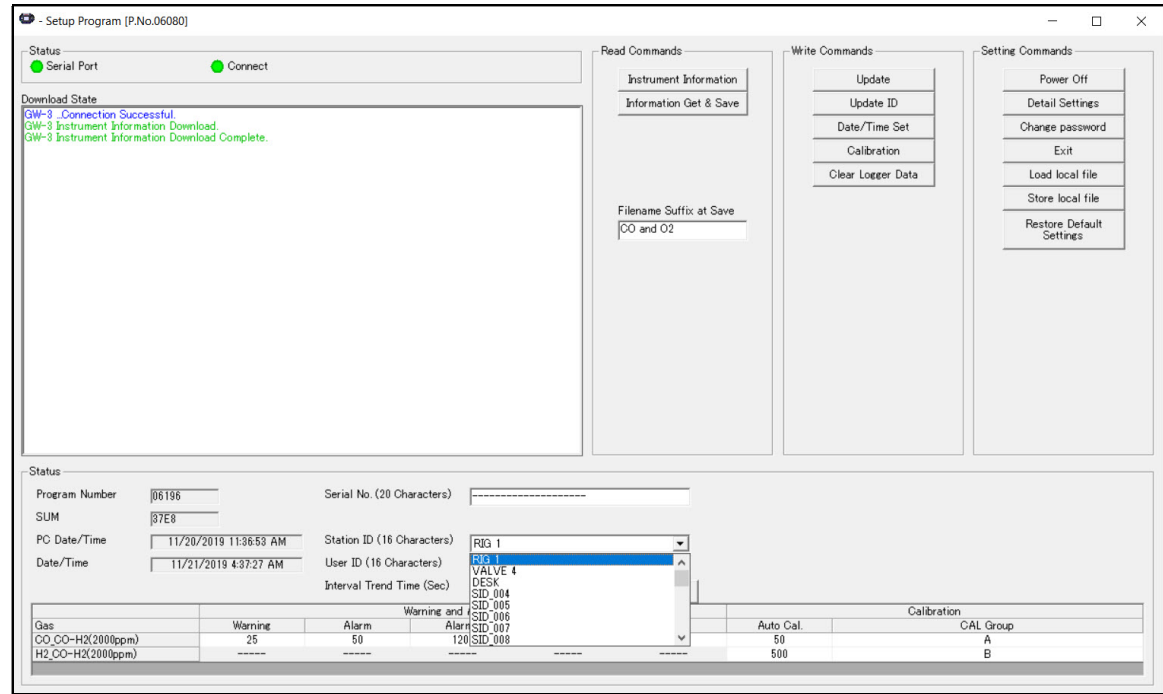
14. If an ID in the imported file contains an unsupported character (like lowercase letters or a symbol), the ID will be highlighted in red. You must fix the unsupported character in the .csv file and re-import the file to clear the error and continue.



**Figure 15: Station & User Tab with Invalid Custom ID**

15. Click **OK** to save changes and return to the Set window.

16. The new station and user ID lists are now visible in the Main Window. Use the drop down menu to select a current station and user ID.



**Figure 16: Station ID Selection in Main Window**

17. Click **Update ID** and then **Yes** in the confirmation window to upload the changes to the instrument.

## Chapter 6: Using .seq Files to Quickly Load Instrument Parameters

Parameter configuration files (.seq files) contain instrument parameters (alarm points, bump test settings, etc.) from a specific configuration. A configuration file can be loaded into an instrument to quickly set the instrument to the desired parameters. Configuration files are most useful to customers who want to set a lot of instruments up with exactly the same parameter settings.

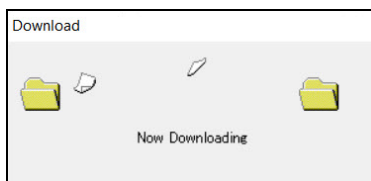
A parameter configuration file can also be used to restore settings in case a factory default ever needs to be done.

---

### Saving a Configuration File

Saving a configuration file saves information like alarm points and bump test settings but does not save the serial number, user ID, or station ID.

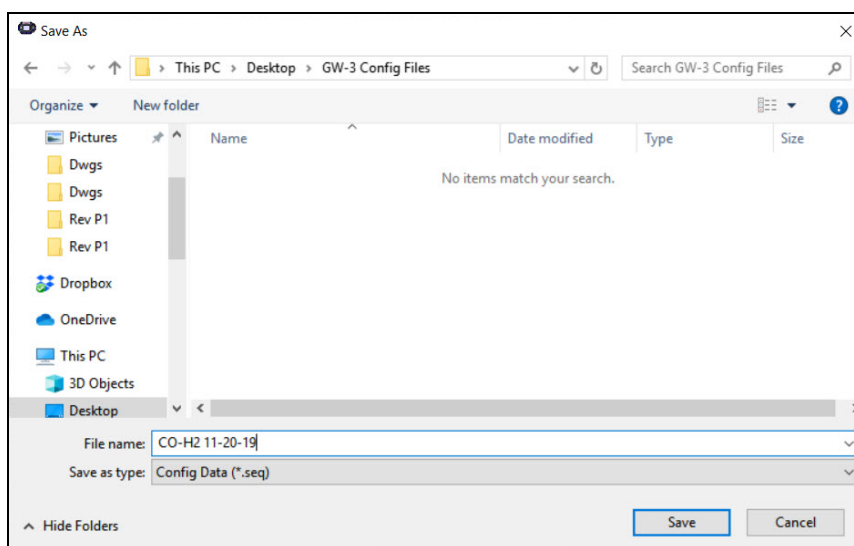
1. Launch the Setup Program as described on pg. 9.
2. Connect the GasWatch 3 as described on pg. 11.
3. Click **Instrument Information** to retrieve the instrument's parameters. The program indicates that it is downloading the parameters.



4. If necessary, view or change any instrument parameters as described in “Chapter 4: Changing Instrument Parameters (Main Window)” on page 14 and “Chapter 5: Changing Instrument Parameters (Detail Settings Window)” on page 18.
5. Click **Store local file**. The Save As Window appears.



6. Navigate to the location where you want to save the file.



**Figure 17: Save As Window**

7. Type in a file name.
8. Click **Save**. The program saves the file and returns to the Main Window.

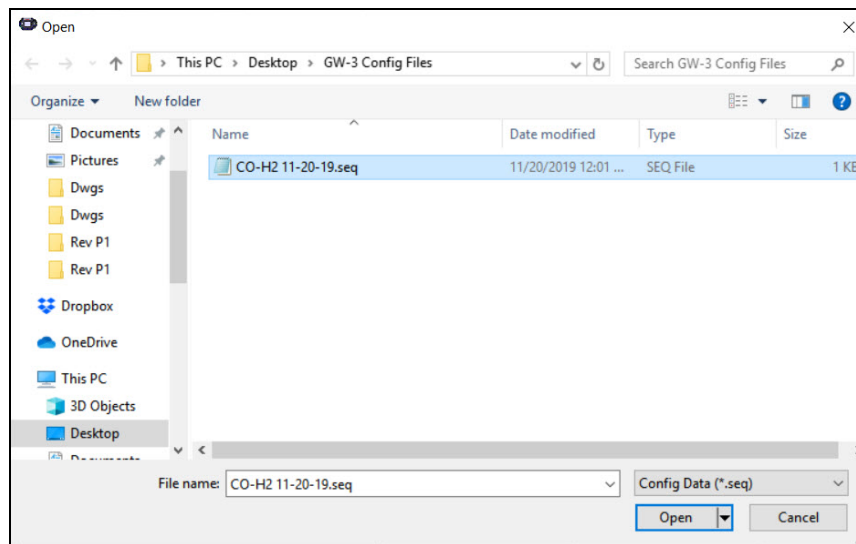
---

## Loading a Configuration File

Loading a configuration file into an instrument changes information like alarm points and bump test settings and does not change the serial number, user ID, or station ID.

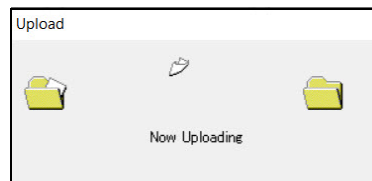
1. Launch the Setup Program as described on pg. 9.
2. Connect the GasWatch 3 as described on pg. 11.
3. Click **Load local file**.

4. Navigate to the location of the file you wish to load.

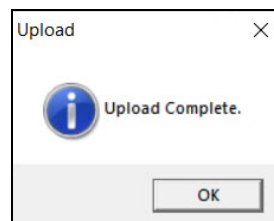


**Figure 18: Open Window**

5. Select the file you wish to load and click **Open**. The program loads the configuration file and displays all of the parameter settings in the Main Window and the Detail Settings Window.
6. Click **Update** and **Yes** in the window that appears.
7. The program begins uploading the configuration file to the instrument.



8. Click **OK** when the upload is complete. The program returns to the Main Window. The instrument's parameters have been updated to match those in the configuration file.



# Chapter 7: Calibration

---

## Materials

- Calibration gas cylinder

The CO and H<sub>2</sub>S samples should have concentrations between 10 and 50% of the detection range. For example, if you are calibrating the CO channel, your calibration cylinder should have a concentration between 10 ppm and 50 ppm.

If you are setting the H<sub>2</sub> response for the H<sub>2</sub>-compensated CO sensor (which only needs to be done when the sensor is replaced), 200 ppm H<sub>2</sub> is recommended.

An oxygen-free source, such as 100% nitrogen is recommended for setting the oxygen zero but a concentration of up to 19.5% is acceptable.

- 0.25 LPM fixed flow regulator
- Non-absorbent tubing
- Calibration cup

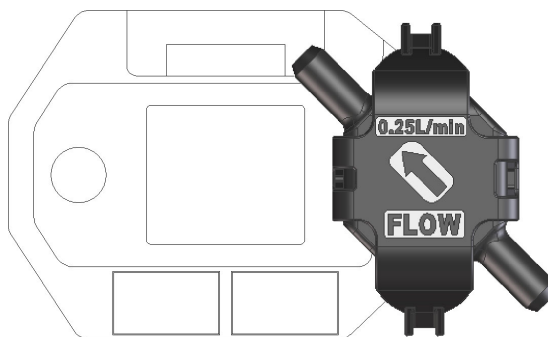
---

## Procedure

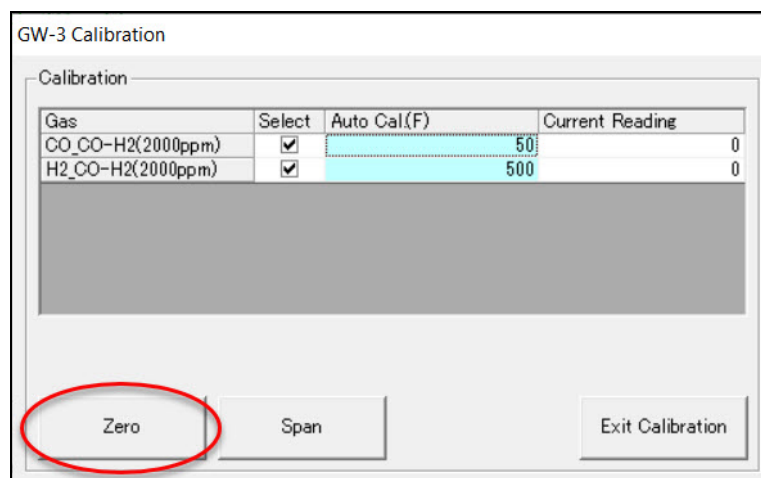
To fully calibrate the sensors, you must do a fresh air adjustment and a span adjustment.

1. Launch the Setup Program as described on pg. 9.
2. Connect the GasWatch 3 as described on pg. 11.
3. Download instrument parameters as described on pg. 12.
4. Click **Calibration** in the **Write Commands** section of the main window.
5. If the GasWatch 3 is in a fresh air environment (environment free of combustible and toxic gases and of normal oxygen content, 20.9%), ***make sure the GasWatch 3 has been turned on for at least 45 seconds*** and then continue to step 7.
6. If the GasWatch 3 is not in a fresh air environment (environment free of combustible and toxic gases and of normal oxygen content, 20.9%):
  - a. Confirm that the regulator knob is turned all the way clockwise. Screw the 0.25 LPM fixed flow regulator onto a zero air cylinder.

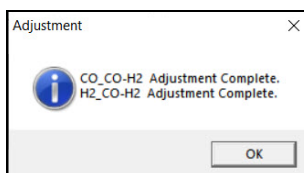
- b. Install the calibration cup onto the GasWatch 3. The calibration cup has an indicated flow direction. Be sure the calibration cup is installed in the correct direction and that it is pushed on all the way.



- c. Use tubing to connect the regulator to the inlet of the calibration cup.  
d. Turn the regulator knob counterclockwise to open the regulator.  
e. Allow zero air to flow for 2 minutes then continue to step 7.  
7. Click **Zero** to adjust the zero reading. The example below shows a H<sub>2</sub>-compensated CO GasWatch 3.



8. Click **OK** in the result window that appears.



9. If you applied zero air, turn the regulator knob clockwise to close the regulator. Unscrew the regulator from the zero air cylinder.  
10. Be sure the value(s) shown in the **Auto Cal.** column of the Calibration Window match the value(s) shown on your calibration gas cylinder(s). If it does not match, double click the auto cal value and type in a value that does match. Changing the auto cal value in this window does not change the instrument's auto cal value. To change the instrument's auto cal value, use the Main Window (see pg. 14).

11. Be sure the gas you want to calibrate is selected. In the example below, the CO response for a H<sub>2</sub>-compensated CO sensor is selected.

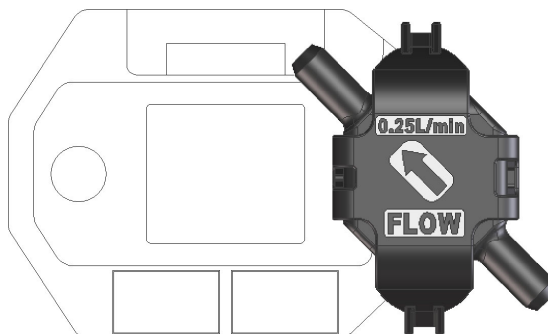
GW-3 Calibration

Calibration

| Gas               | Select                              | Auto Cal(F) | Current Reading |
|-------------------|-------------------------------------|-------------|-----------------|
| CO_CO-H2(2000ppm) | <input checked="" type="checkbox"/> | 50          | 0               |
| H2_CO-H2(2000ppm) | <input type="checkbox"/>            | 500         | 0               |

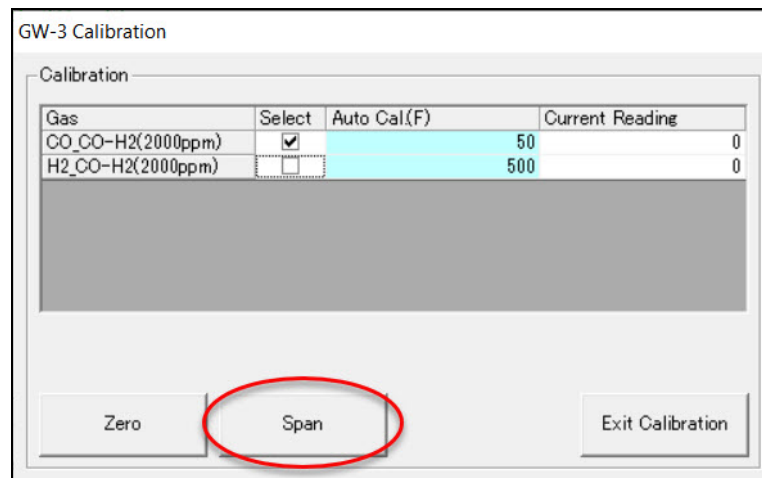
Zero Span Exit Calibration

12. Confirm that the regulator knob is turned all the way clockwise. Screw the 0.25 LPM fixed flow regulator onto the calibration cylinder.
13. If not already installed for zero air application, install the calibration cup onto the GasWatch 3. The calibration cup has an indicated flow direction. Be sure the calibration cup is installed in the correct direction and that it is pushed on all the way.

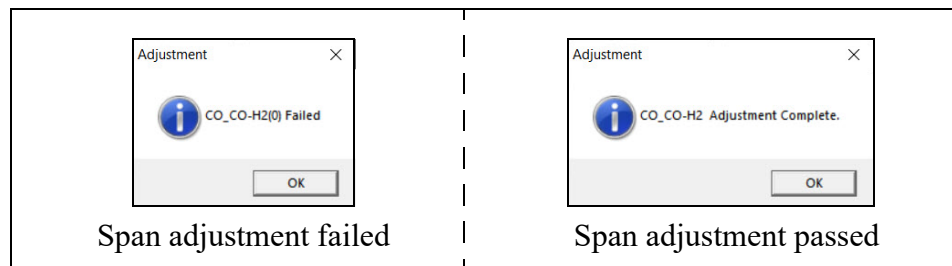


14. If necessary, use the tubing to connect the regulator to the inlet of the calibration cup.
15. Turn the regulator knob counterclockwise to open the regulator.
16. Allow the gas to flow for 2 minutes. The gas readings are shown in the **Current Reading** column.

17. Click **Span** to perform a span adjustment on the selected channel(s).



18. Click **OK** in the result window that appears. If the span adjustment fails, the gas reading displays in the result window.



19. Turn the regulator knob clockwise to close the regulator.
20. If necessary, repeat step 10 through step 19 for the other gas channel.
21. Unscrew the regulator from the cylinder and remove the calibration cup from the GasWatch 3.
22. Click **Exit Calibration** to return to the Main Window.

## Chapter 8: Spare Parts List

**Table 5: Spare Parts List**

| <b>Part Number</b> | <b>Description</b>   |
|--------------------|--|
| 47-5084            | USB/IrDA adapter, Legasic, module only (for use with all premier portables)  |
| 47-5084RK-01       | USB/IrDA adapter, Legasic, module and cable (for use with all premier portables)   |
| 47-5085RK          | USB A to USB mini cable, 6 feet, for 47-5084RK USB/IrDA adapter  |
| 71-0515            | GW-3 Setup Program Operator's Manual (this document)   |
| 81-0062RK-01       | Calibration cylinder, 50 ppm CO in N <sub>2</sub> , 34 liter steel   |
| 81-0062RK-03       | Calibration cylinder, 50 ppm CO in N <sub>2</sub> , 103 liter  |
| 81-0064RK-01       | Calibration cylinder, 50 ppm CO in air, 34 liter steel   |
| 81-0064RK-03       | Calibration cylinder, 50 ppm CO in air, 103 liter  |
| 81-0076RK-01       | Calibration cylinder, zero air, 34 liter steel   |
| 81-0076RK-03       | Calibration cylinder, zero air, 103 liter  |
| 81-0078RK-01       | Calibration cylinder, 100% nitrogen, 34 liter steel  |
| 81-0078RK-03       | Calibration cylinder, 100% nitrogen, 103 liter   |
| 81-0151RK-02       | Calibration cylinder, 25 ppm H <sub>2</sub> S in nitrogen, 58 liter  |
| 81-0151RK-04       | Calibration cylinder, 25 ppm H <sub>2</sub> S in nitrogen, 34 liter aluminum   |
| 81-1050RK-25       | Regulator, fixed flow, 0.25 LPM, with gauge and knob, for 17 liter and 34 liter steel cylinders (cylinders with external threads)                          |
| 81-1051RK-25       | Regulator, fixed flow, 0.25 LPM, with gauge and knob, for 34 liter aluminum, 58 liter, and 103 liter cylinders (cylinders with internal threads)           |
| 81-1194            | Calibration cup  |
| 81-GW3CO           | Calibration kit for CO and CO/O <sub>2</sub> GasWatch 3: 103 liter cylinder of 50 ppm CO in N <sub>2</sub> , regulator, tubing, calibration cup, case      |
| 81-GW3CO-LV        | Calibration kit for CO and CO/O <sub>2</sub> GasWatch 3: 34 liter steel cylinder of 50 ppm CO in N <sub>2</sub> , regulator, tubing, calibration cup, case |

**Table 5: Spare Parts List**

| <b>Part Number</b> | <b>Description</b>   |
|--------------------|--|
| 81-GW3COH          | Calibration kit for H <sub>2</sub> -compensated CO GasWatch 3: 103 liter cylinder of 50 ppm CO in N <sub>2</sub> , 34 liter steel cylinder of 200 ppm H <sub>2</sub> , regulator, tubing, calibration cup, case      |
| 81-GW3COH-LV       | Calibration kit for H <sub>2</sub> -compensated CO GasWatch 3: 34 liter steel cylinder of 50 ppm CO in N <sub>2</sub> , 34 liter steel cylinder of 200 ppm H <sub>2</sub> , regulator, tubing, calibration cup, case |
| 81-GW3HS           | Calibration kit for H <sub>2</sub> S GasWatch 3: 58 liter cylinder of 25 ppm H <sub>2</sub> S in N <sub>2</sub> , regulator, tubing, calibration cup, case   |
| 81-GW3HS-LV        | Calibration kit for H <sub>2</sub> S GasWatch 3: 34 liter aluminum cylinder of 25 ppm H <sub>2</sub> S in N <sub>2</sub> , regulator, tubing, calibration cup, case  |
| 81-GW3OX           | Calibration kit for O <sub>2</sub> GasWatch 3: 103 liter cylinder of 100% N <sub>2</sub> , regulator, tubing, calibration cup, case  |
| 81-GW3OX-LV        | Calibration kit for O <sub>2</sub> GasWatch 3: 34 liter steel cylinder of 100% N <sub>2</sub> , regulator, tubing, calibration cup, case   |