



MODERNWATER

The new Microtox LX Series is the next generation of laboratory based acute toxicity analyzers. The new analyzer enhances Modern Water's proven M500 technology with improved features to simplify testing in demanding drinking, industrial and wastewater applications.

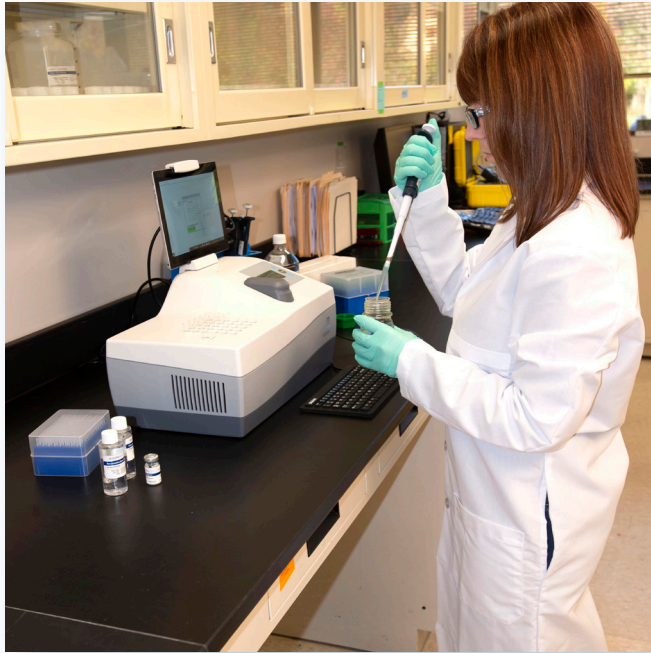
For over 30 years, Modern Water's Microtox technology has provided laboratories with proven, cost effective technology to protect drinking water supplies, ensure compliance with regulatory standards and conduct research. The new Microtox LX analyzer builds on the foundation that has made our toxicity product line among the most trusted in the industry.

Microtox[®] LX






KEY BENEFITS



- Biological early warning system sensitive to more than 2,700 simple and complex chemicals allows the protection of drinking water supplies from accidental or deliberate contamination.
- Test results highly correlated with other widely accepted toxicity test method helps to ensure compliance with regulatory and effluent permit standards in wastewater applications.
- Proven – Numerous independent scientific studies have documented Microtox's performance as an effective toxicity-screening tool in a wide array of applications.
- Increased Sensitivity – The use of a new proprietary, fully dynamic photomultiplier tube increases the sensitivity of the instrument.
- Fast, Reliable and Reproducible Results – Results Available in as little as 15 minutes after initial sample preparation.
- The instrument's new automatic color correction feature adjusts test results based on the sample's color and turbidity.
- Actively cooled sample and read wells enable more precise and consistent readings.
- Cost effective – A low cost toxicity test that requires small sample volumes.
- Manufactured in a certified ISO 13485 quality system with 100% lot traceability.



MODERNWATER

Specifications	
Measurement Method	Bioluminescence
Light Source	Proprietary fully dynamic photomultiplier
Reagents	Genuine Microtox Reagents
Dimensions	18" x 10" x 17" (45.7 cm x 25.4 cm x 43.2 cm)
Bench Space Required	
Weight	20 lbs (~9 kg)
Display	17.8 mm (7 in) color touch screen tablet
Tablet Operating System	Microsoft Windows 10 with Microtox LX Software preloaded
Input	Touchscreen, Mouse, Keyboard, Stylus
Connectivity	USB, Wifi, Bluetooth
Interface	3 ports for USB flash drive, keyboard, mouse or compatible external printer
Temperature	
Room Temperature	15° C to 30° C
Active Cooling Reagent well	5.5° C +/- 1° C
Active Cooling Incubator block	15° C +/- 0.5° C
Active Cooling Read Well	15° C +/- 0.5° C
Reagent Operational Temperature	10° C to 28° C
Instrument Operational Humidity	5% to 95% non-condensing
Certifications	CE, IEC 610010-1:2010, IEC 61010-2-010:2014; IEC 61326-1:2103; FCC part 15, Subpart B
Water Ingress IEC	IEC 60529: IPX-O
Power Requirements	Auto-ranging universal AC input 100-240V AC, 50/60 Hz, 200 watts
ISO Accreditation	 ISO 13485 FM 583842

Microtox LX Software	
Standard Protocols	Basic Toxicity Test Comparison Test Confirmation Test ASTM (D5660) DIN (Deutsches Institut für Normung 38412 Teil Test) Screening Toxicity Test SOLO Screening Test International Standards Organization (ISO) 11348-3 Solid Phase/Basic Solid Phase WET (Whole Effluent Toxicity)
Custom Protocols	Parameters of standard test protocols can be modified
Quality Control Protocols	Zinc and Phenol
Additional Analysis Capabilities	Trend Monitoring
Color Correction	Test results are automatically adjusted for variations in water quality
Data Storage	Test results can be stored for future reference or downloaded to a USB drive

Ordering Information	
Instrument AZF60A000	Microtox LX Analyzer (includes Analyzer, Keyboard, Mouse and Stylus)
Replacement Parts	
Microtox Reagent Start Kit	
Product Description	Product Code
Microtox® Acute Starter Pack	AZF686060
<i>Includes the following:</i> <ul style="list-style-type: none"> 1 AZF686018 Microtox® Acute Reagent 10 vials 1 AZF686011 Microtox® Diluent 1 AZF686019 Microtox® Osmotic Adjusting Sol'n 2 AZF686016 Microtox® Reconstitution Solution 1 686005 Disposable Glass Cuvettes: 400x 	

Accessories	
Product Description	Product Code
Disposable Glass Cuvettes: box of 1000	AZF686004
Disposable Glass Cuvettes: box of 400	AZF686005
Repeat Pipettor	A00008
Adjustable Volume Pipette: 10-100 uL	AZF686087
Adjustable Volume Pipette: 100-1000 uL	A00176
Combitip 0.5 mL for use with Repeat Pipette (box of 100)	AZF686078
Combitip 12.5 mL for use with Repeat Pipette (box of 100)	AZF686079
Cuvette Racks (set of 5)	AZF686250
Rainin 250 uL Pipette Tips (pkg. of 1000)	AZF68608
10-100 uL Pipette Tips: tray of 96	SD30166
100-1000 uL Pipette Tips: tray of 96	A00013
CONF** Solid Phase Test Filter Columns and Tubes (pkg. of 1000)	AZF686093
Extended Length Pipette Tips for Solid Phase Test (pkg. of 1000)	AZF686091
Test Tube Support (each)	AZF686096
Disposable Polypropylene Beakers for Solid Phase Test (pkg. of 100)	AZF686122
Incubator Test Tube Support	AZF686401
Replacement Fan Filters (pkg of 5)	AZF50A012

Modern Water Inc
 15 Reads Way, Suite 100
 New Castle
 DE 19720
 United States
 T: +1 302 669 6900
 info@modernwater.com

Modern Water Monitoring Ltd
 Unit 22
 South Cambridge Business Park
 Babraham Road
 Sawston
 Cambridge CB22 3JH
 United Kingdom
 T: +44 (0)1483 696 030
 info@modernwater.co.uk

Modern Water Technology
 (Shanghai) Co. Ltd
 #1702 Xinyin Building
 No. 888 Yishan Road
 Xuhui District
 Shanghai 200233
 P.R. of China
 Tel: +86 21 6230 6747
 sales.china@modernwater.com



MODERNWATER