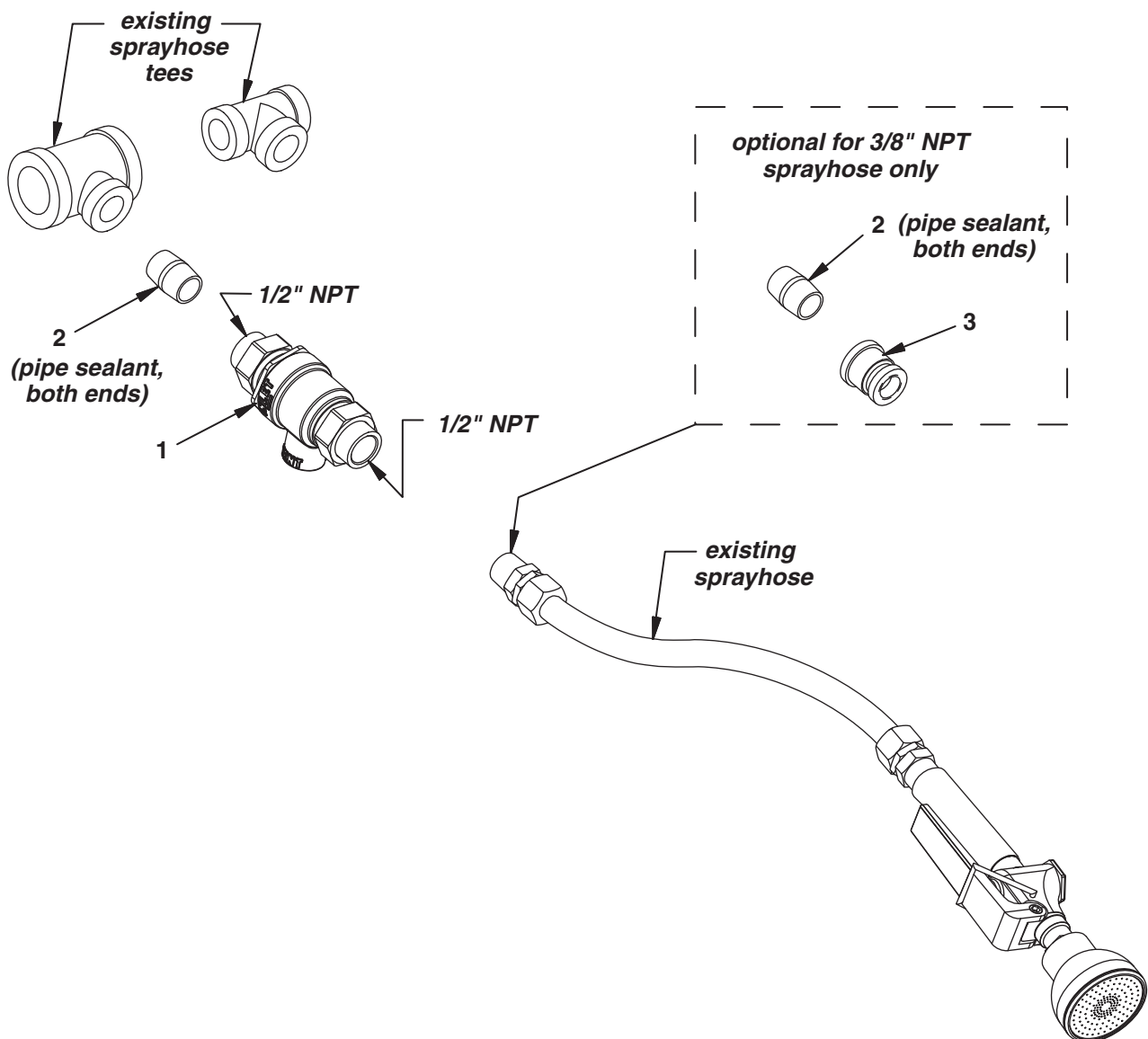
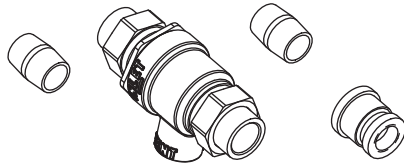


Installation

S45-2310 Parts List

ITEM	PART NO.	DESCRIPTION	QTY.
1	269-1867	BACK FLOW PREVENTER, WATTS 9D	1
2	113-006AW	CLOSE NIPPLE, 1/2"	2
3	169-078	COUPLING, REDUCING 1/2" x 3/8"	1





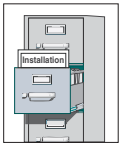
Installation

S45-2310

Backflow Preventer Kit

ASSE 1012 compliant
(WATTS 9D)

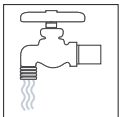
WARNING



Read this installation manual completely to ensure proper installation, then file it with the owner or maintenance department. Compliance and conformity to drain requirements and other local codes and ordinances is the responsibility of the installer.



Separate parts from packaging and make sure all parts are accounted for before discarding any packaging material. If any parts are missing, do not begin installation until you obtain the missing parts.



Flush water supply lines before beginning installation and after installation is complete. Test the unit for leaks and adequate water flow. Main water supply to the eye/face wash should be "ON" at all times. Provisions shall be made to prevent unauthorized shutoff. Flushing fluid should be tepid per ANSI Z358.1.



The inspection and testing results of this equipment should be recorded weekly to verify proper operation. This equipment should be inspected annually to ensure compliance with ANSI Z358.1.



Workers who may come in contact with potentially hazardous materials should be trained regarding the placement and proper operation of emergency equipment per ANSI Z358.1.



Due to variations in site conditions and local codes and ordinances, this product may not be suitable for your application. Bradley recommends that you contact the authority having jurisdiction for cross connection compliance prior to installation.



Product warranties may be found under "Product Information" on our web site at www.bradleycorp.com. For other questions regarding the operation or installation of this product, visit our web site or call 1-800-BRADLEY.